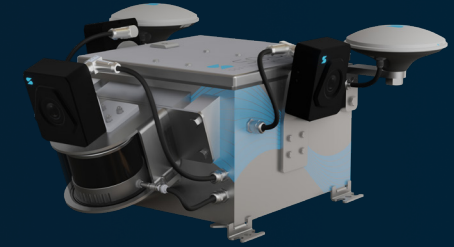


Datasheet SDX-Compact

SDX-Compact is the proven plug-&-play solution for large-scale 3D site documentation. Mounted on construction machines like dozers, it captures accurate point clouds in real time - perfect for earthmoving, as-built records, and progress tracking. With integrated GNSS/INS and LiDAR, it delivers survey-grade data with minimal operator effort.



Technical Details	Compact 10°	10° Mapping Only	Compact 20°	20° Mapping Only	OnTop	OnTop Mapping Only
General System Performance						
Absolute Horizontal Accuracy	<2.5 cm RMS (1)				<2 cm RMS (1)	
Absolute Vertical Accuracy	<3 cm RMS (1)				<2.5 cm RMS (1)	
Relative Accuracy	<1.5 cm (1)				<1 cm (1)	
Data Storage	128 GB					
Weight	17.7 kg	15.3 kg	17.7 kg	15.3 kg	18 kg	15.3 kg
Scanning Range	35 m (114 ft)	35 m (114 ft)	35 m (114 ft)	35 m (114 ft)	42 m (137 ft)	42 m (137 ft)
Laser Scanner						
Laser Class	Class 1 Eye Safe					
Range	0.05 to 120 m (0.16-393 ft)					
Channel	32					
Ranging Capability	80 m @ 10% Reflectivity (262 ft) (Ch. 9-24) 50 m @ 10% Reflectivity (164 ft) (Ch. 1-8, 25-32)					
FOV	360°					
Opening Angle	31° (-16° to +15°)					
Sensor Inclination	10°	10°	20°	20°	10°	10°
Horizontal Resolution	0.18° (10 Hz)					
Vertical Resolution	1°					

Compact 10°

10° Mapping Only

Compact 20°

20° Mapping Only

OnTop

OnTop Mapping Only

	Compact 10°	10° Mapping Only	Compact 20°	20° Mapping Only	OnTop	OnTop Mapping Only
Camera						
Number of Cameras	3	0	3	0	3	0
Resolution	1920 x 1080 (2 MP)		1920 x 1080 (2 MP)		1920 x 1080 (2 MP)	
CMOS Image Sensor	1920 x 1080 (2 MP)					
FOV	Front 90°, Side 60°		Front 90°, Side 60°		Front 90°, Side 60°	
GNSS-INS						
GNSS Signals	GPS: L1 C/A, L1C, L2C, L2 P, L5 GLONASS: L1 C/A, L2 C/A BeiDou: B1I, B2I, B3I Galileo: E1, E5a, E5b, AltBOC QZSS: L1 C/A, L2C, L5 SBAS: EGNOS, WAAS, GAGAN, MSAS, SDCM					
Update Rate	100 Hz					
Horizontal Accuracy	0.6 cm + 0.5 cm					
Vertical Accuracy	1 cm + 1 ppm					
Initializing	7 s					
Attitude Accuracy - Heading	0.15°					
Attitude Accuracy - Pitch/Roll	0.02°					
Environments						
Operating Temperature	-10°C to 50°C (14°F to 122°F)					
Storage Temperature	-20°C to 60°C (-4°F to 140°F)					
Ingress Protection	IP67					
Connectivity						
4G Modem (LTE/UMTS) Quectel EM05 Series	yes					
Wi-Fi 5 802.11ax 2x2 dual-band EmWicon WMX6218	yes					
Electrical						
Input Voltage	9-36 V					
Power Consumption	<90 W (@24 V)	<60 W (@24 V)	<90 W (@24 V)	<60 W (@24 V)	<90 W (@24 V)	<60 W (@24 V)

(1) under Sodex Testing Conditions